

Apartment 07

One Bedroom One Bathroom

B2-3-S10;

Building	B
Floor	III
Interior area	65.15m ²
Terraces	53.36m ²
Total area	118.51m²

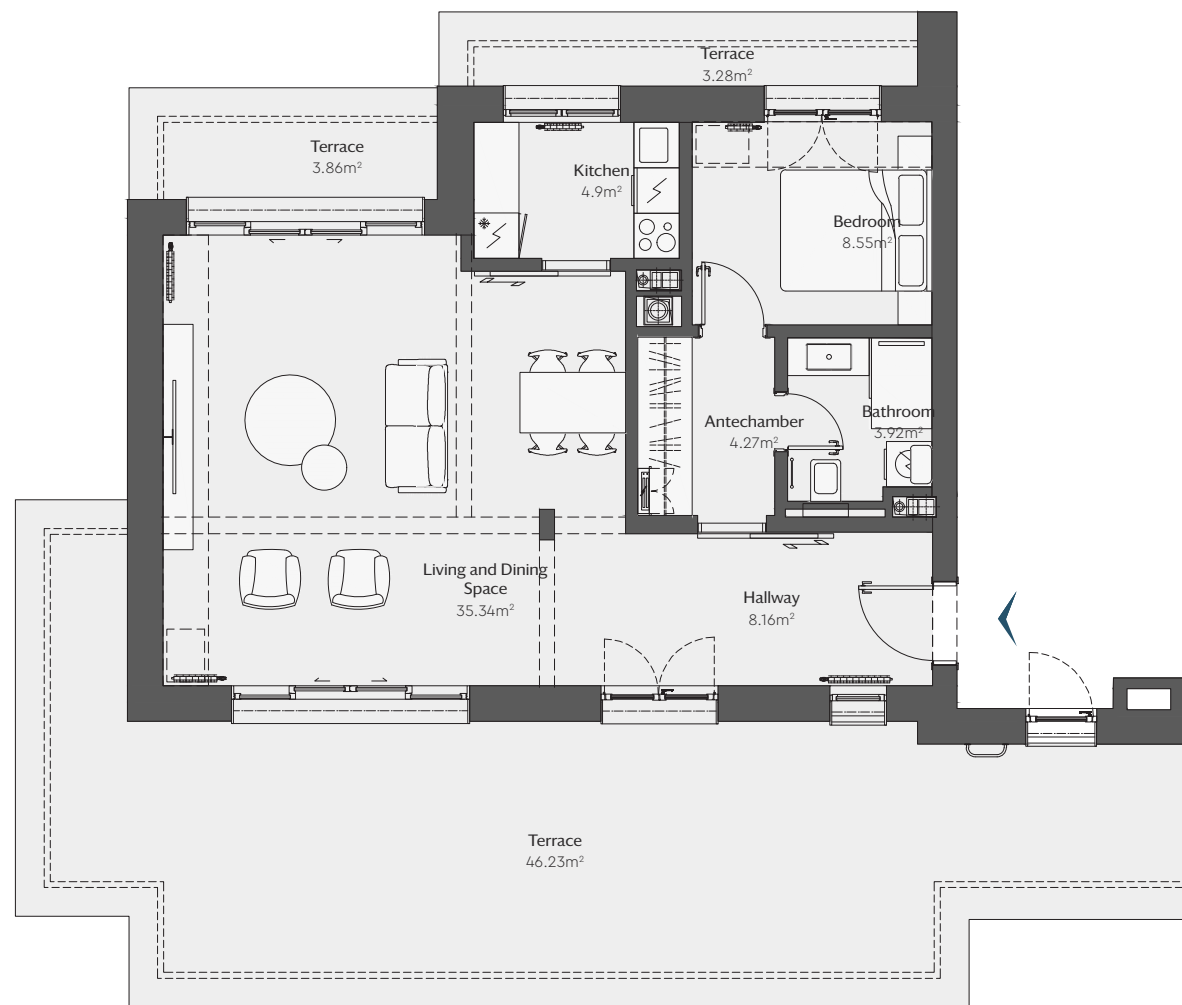
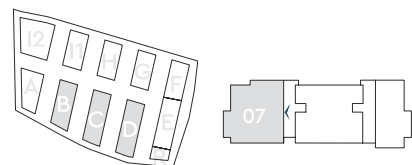
C2-3-S10; D2-3-S10

Buildings	C,D
Floor	III
Interior area	65.12m ²
Terraces	52.64m ²
Total area	117.76m²

Location

IN COMPLEX

IN BUILDING



All dimensions are approximate and subject to normal construction variances and tolerances.
Plans and dimensions may contain minor variations from floor to floor. The area on this floor plan exceeds the usable area.

1m 1:100



Apartment 07